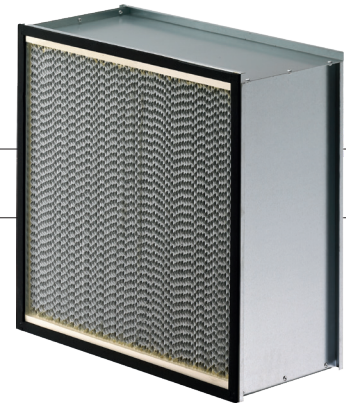


BioCel®



HEPA FILTER

Features and Benefits

- Classified E10 in accordance to EN1822:2010
- Robust construction
- High airflow capacity: 3000 m³/h
- Suitable for front, rear and side access systems

Applications

- Final filtration in central air handling systems and industrial installations
- Pre-filtration for cleanrooms
- High air volume applications

As a E10 EN1822 classified filter, BioCel can be used to upgrade an existing HVAC installation into a HEPA installation.

To ensure a sturdy construction, the filter's header and cell sides are interlocked. No adhesives or sealants are used. Rigidity is further enhanced by two support bars on the air leaving side. With an airflow capacity range of 3000 m³/h. The BioCel filter can also be used in high air volume applications.

This high capacity feature offers many benefits: In new installations, fewer filters are required to handle the same volume of air compared to filters of the same size with a lower capacity. As a result, installation space is significantly reduced. In existing installations, BioCel filters offer low media resistance which reduces running costs. The filter is easy to install in front, rear and side access systems.

Standard configuration

Filter medium		Filter frame	
Material	Fibreglass	Material	Extruded aluminum
Separators	Aluminum	Cell Sides	Galvanized steel
Temperature		Gasket	
Max. operating temperature	150 °C	Material	Polyurethane foamed

Performance

Dimensions (mm)			EN1822: 2010	Low airflow m ³ /h	Initial Resistance Pa	High airflow m ³ /h	Initial Resistance Pa	Efficiency @ 0,3 µm %	Media Area m ²
W	H	D							
592	592	292	E10	2000	165	3000	250	95	13,7
592	592	149	E10	1000	165	1500	250	95	6,4

BioCel[®] Filter

Legend

Type	B	BioCel
Filter Classification	10	E10 according to EN1822
Execution	SF	Single extruded header, galvanized face guard
	DF	Double extruded header, galvanized fae guard
Gasket	None	No gasket
	C	Foamed gasket at rear of flange (CAS)
	D	Foamed gasket at front of flange (DAS)
	B	Foamed gasket both sides (only with DF)
Nominal size code (inch)	242412	Standard sizes are 12, 16, 20, 24, 25
Metric sizes	-	Always stated in mm only
Header size (mm)	None	25 mm extruded aluminium header
	A	20 mm extraded aluminium header

Example: B10 SF C 242412A



AAF International
European Headquarters
Odenwaldstrasse 4, 64646 Heppenheim
Tel: +49 (0)6252 69977-0
aafintl.com

AAF International B.V. has a policy of continuous product research and improvement and reserves the right to change design and specifications without notice.

©2019 AAF International and its affiliated companies.
EHU_501_EN_032019